

WEB PORTAL



GROUNDWATER CONNECTION FACT SHEET SERIES

Groundwater Monitoring Web Portal Introduction

As the community-based groundwater monitoring program developed, there was a need for an effective way to collect and display data. The Rocky View Well Watch web portal (Figure 1) has been designed specifically for Rocky View County participants to enter their water level data directly into an online data base. This will streamline data collection for all participants and our hope is that watershed partnership groups and researchers will be able to use this long term monitoring data to better understand groundwater sustainability. In addition, this resource will hopefully be used to observe trends and make land-use decisions throughout the County.

To access the Web Portal type use the following web address:

<http://rockyview.geocens.ca/>

KEY FEATURES:

PARTICIPANTS

- Easily add data
- View data within 48 hours of submitting it
- View historical data as either a table or a graph

PUBLIC

- View data for any participating well.
- Select the amount of data viewed on the graph
- Download water level data
- View well network coverage

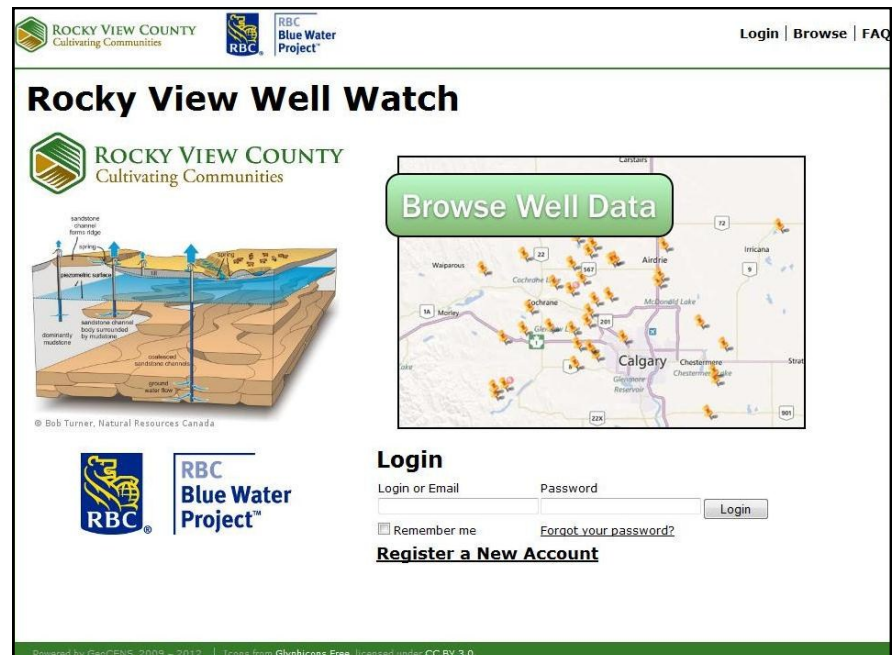


Figure 1: Screenshot of the Rocky View Well Watch web portal homepage

What is the web portal?

The web portal is an online tool to access the database. This web portal allows for data to be entered and stored in one location – minimizing the number of people involved and decreasing the chance of an input error or data being missed. The web portal also allows people to explore other wells in the project and view graphs for these participating well.

What does this mean to Participants?

The biggest change to Participants is the ability to enter data directly into the web portal and view graphs corresponding to their water level data. There is a short delay between the data being entered by the Participant and the data being uploaded for viewing purposes. The project team aims to keep this delay less than 48 hours, which allows for quality control checks to be completed. Once the data is approved it can be viewed by the Participant and members of the public on the browser side of the web portal. This feature allows Participants to view not only their data, but the water level data of any participating well. It is hoped that the web portal will make the process of monitoring wells easier, and provide the necessary feedback to keep volunteers interested in participating over the long term.

Who are the other potential users of the web portal?

One of the aspects of this project is to educate school age children as well as the community. Therefore it is exciting to mention that schools have access to the web portal data. Participants are providing real data to Grade 8 students who will use it in computer labs to learn about groundwater sustainability. This training of the next generation about groundwater will hopefully spark a passion for science in young men and women. In addition, community members not actively participating in the project can also access the information and learn more about groundwater trends in their local area.

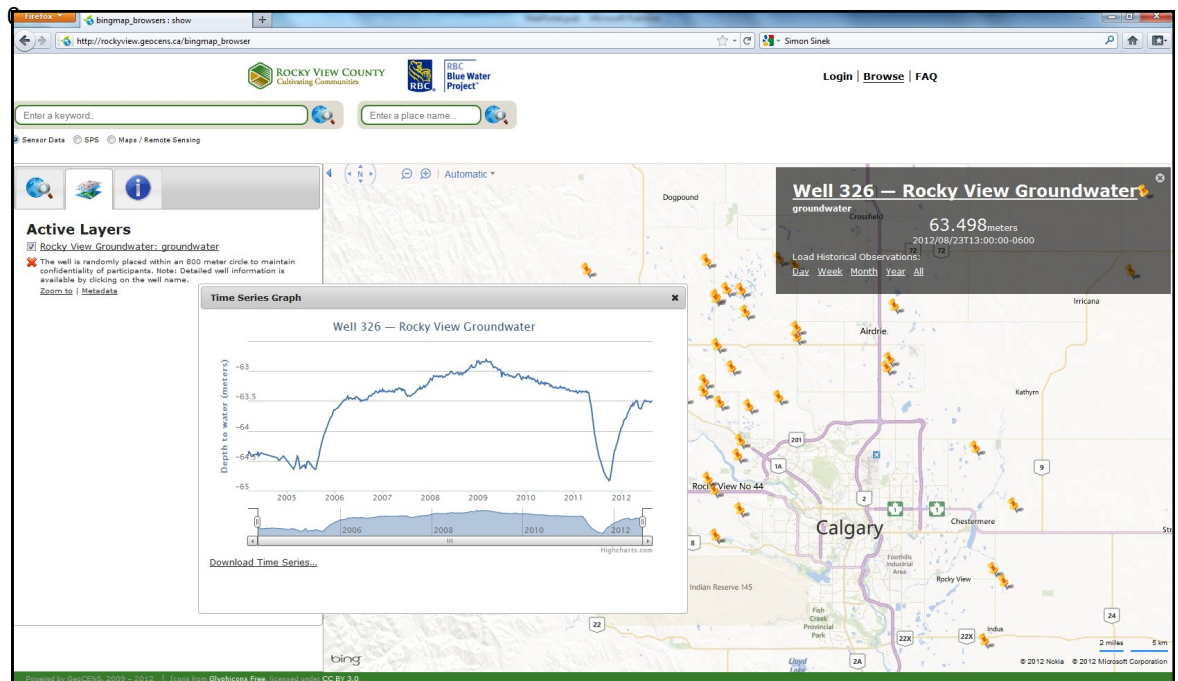


Figure 2: Screenshot of the browser side of the Rocky View Well Watch web portal, which members of the general public can access and view time series graphs for any of the monitored wells.

Who set it up?

The web portal was developed by a team in the Schulich School of Engineering - Geomatics Department at the University of Calgary. The web portal has undergone numerous revisions and testing periods to ensure the launch would be a smooth transition for participating landowners. The Geomatics team has partnered with the Geoscience team at the University of Calgary to complete a user friendly version of the web portal for participating landowners, researchers, County decision makers and the general public.

Where do I direct my questions or concerns?

The web portal has undergone testing to ensure it is ready for Participants to access; however, it is possible there will still be a few problems encountered in the transition. If you have any questions please check the **Frequently Asked Questions** section. If you are unable to find the answer you are looking for, or something doesn't seem to work, please contact the **Project Coordinator** at hydro@ucalgary.ca.

Groundwater Connection Fact Sheets are published by the University of Calgary in partnership with the Biogeoscience Institute and Royal Bank of Canada—Blue Water project. This material may be freely copied for educational use provided the source is acknowledged.

Last updated: November 2012

For more information please contact:

Department of Geoscience
University of Calgary
ES118 - 2500 University Drive NW
Calgary, Alberta
T2N 1N4

Phone: 403-210-5401
E-mail: hydro@ucalgary.ca



RBC
Blue Water
Project™